

NOTICE OF PUBLIC HEARING

The Board of Commissioners will meet at 2:00 p.m. on August 17, 2010 in the Commissioners' Auditorium, 205 W. 5th, Ellensburg, WA, Room 109 in the County Courthouse, to consider the adopting portions of Hobert Avenue, Plumridge Avenue, Magnolia Street, and Pfenning Road that are in the Vista View Division I plat on to the Kittitas County Road Maintenance System, identifying placement of stop signs, and establishing a speed limit in Kittitas County, Washington. More information is online at:

<http://www.co.kittitas.wa.us/notices/>

Anyone with an interest in this matter is urged to attend said hearing where all testimony will be taken. Written comments may be received at 205 W. 5th, Suite 108, Ellensburg, WA 98926 at or prior to the hearing.

Kittitas County complies with all ADA requirements.

Dated: July 20, 2010, Ellensburg, Washington.

BOARD OF COUNTY COMMISSIONERS
KITTITAS COUNTY, WASHINGTON

Clerk of the Board

Publication:

Daily Record - 7/29/10; 8/5/10; 8/12/10

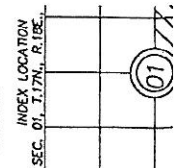
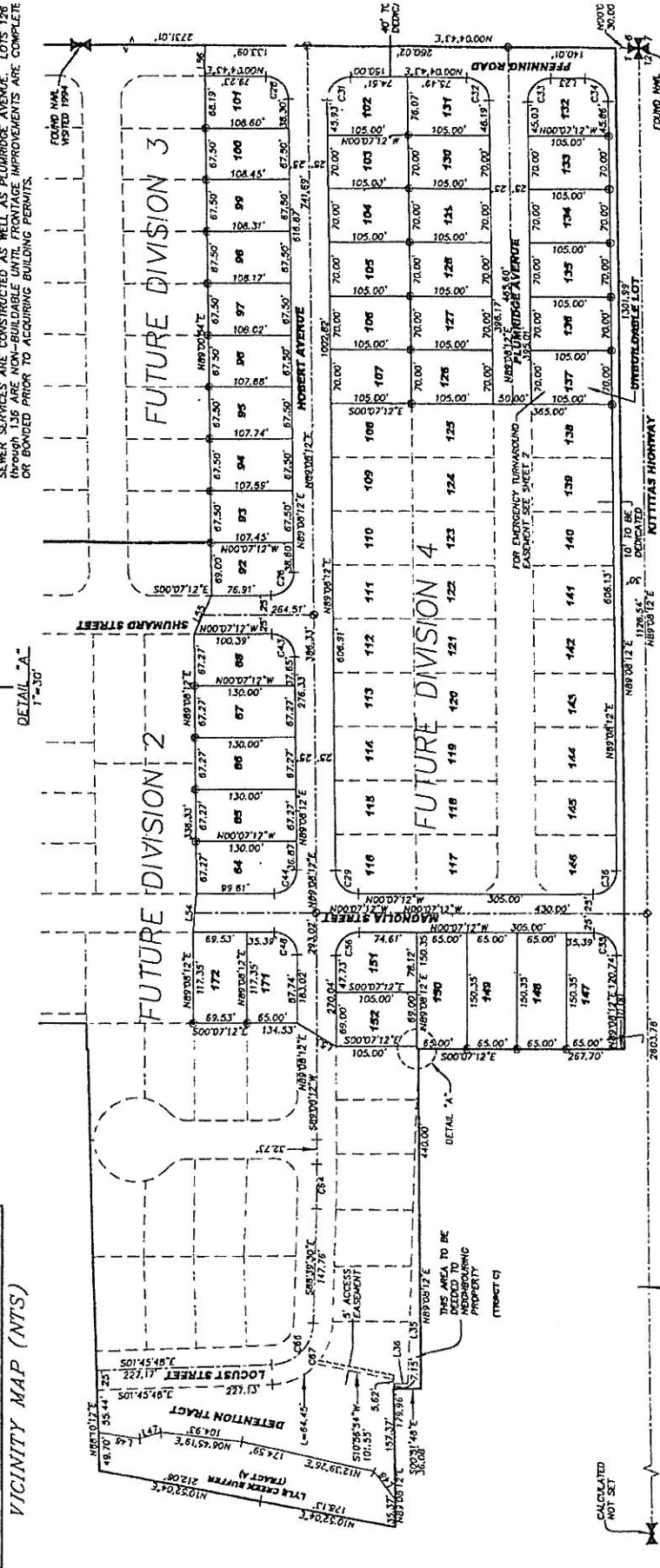
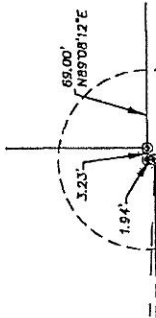
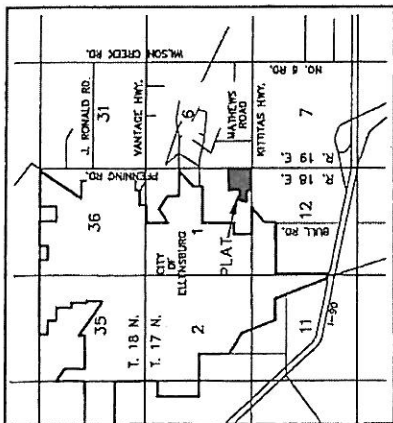
VISTA VIEW ESTATES

PTN. SE 1/4 OF SECTION 1, T.17N., R.18E., W.M.
KITITAS COUNTY, STATE OF WASHINGTON

DIVISION I

SURVEY NOTES

- AS LONG AS THE STORM DRAIN DETENTION AREAS ARE PRIVATELY AND NOT PUBLICLY OWNED, IT WILL BE OPERATED AND MAINTAINED BY HOI DEVELOPMENT, UNTIL THE DECLARATION AND COVENANTS FOR THE VISTA VIEW ESTATES IS RECORDED AT WHICH TIME THE HOMEOWNERS ASSOCIATION WILL ASSUME OPERATIONAL AND MAINTENANCE RESPONSIBILITIES. IF HOI DEVELOPMENT, INC. OR HOMEOWNER ASSOCIATION FAILS TO OPERATE AND MAINTAIN PER THE REQUIREMENTS OF THE PERMITS, THE RESPONSIBILITY OF THE CITY OF ELLENBURG AND MAINTENANCE OF THIS REQUIREMENT SHALL BECOME THE RESPONSIBILITY OF THE OWNERS OF LOTS 68, 92, 107, 126 THROUGH 137, 147 THROUGH 152, 171 AND 172, AND THE OWNER(S) OF DIVISION 4 SHOWN HEREON. SAID OPERATION AND MAINTENANCE TO BE IN ACCORDANCE WITH THE PERTINENT DEPARTMENT OF ECOLOGY "BEST MANAGEMENT PRACTICES" MANUAL.
- THE MAINTENANCE OF KITITAS HIGHWAY SWALE SHALL BE THE RESPONSIBILITY OF LOTS 132 THROUGH 137, 147 AND THE OWNER(S) OF DIVISION 4 LOTS FRONTING TO SAID SWALE AS SHOWN HEREON. SAID OPERATION AND MAINTENANCE TO BE IN ACCORDANCE WITH THE PERTINENT DEPARTMENT OF ECOLOGY "BEST MANAGEMENT PRACTICES" MANUAL.
- INCLUDED IN EACH DIVISION OF THIS PLAT ARE TEMPORARY UTILITY, DRAINAGE, IRRIGATION AND ROADWAY EASEMENTS EXTENDING INTO FUTURE DIVISIONS OF THE PLAT WHICH WILL BE MADE PERMANENT AS EACH PHASE IS CONSTRUCTED. REF. TO THE PROJECT CIVIL DRAWINGS ON FILE AT THE CITY OF ELLENBURG.
- FRONT LOT CORNERS ARE LOCATED IN CURB AS AN EXTENSION OF THE LOT LINE.
- FOR LINE AND CURVE TABLES SEE SHEET 2.
- LOTS 108 THROUGH 125 AND 137 THROUGH 146 ARE NON-BUILDABLE UNTIL WATER, SEWER SERVICES ARE CONSTRUCTED AS WELL AS PLUMBRIDGE AVENUE. LOTS 126 THROUGH 136 ARE NON-BUILDABLE UNTIL FRONTAGE IMPROVEMENTS ARE COMPLETE OR BONDED PRIOR TO ACQUIRING BUILDING PERMITS.

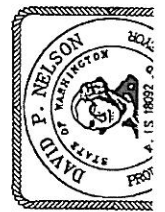
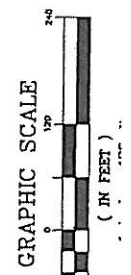


LEGEND

- SECTION CORNER COMMON TO FOUR SECTIONS.
- QUARTER CORNER COMMON TO TWO SECTIONS.
- CENTERLINE MONUMENT W/STRADDLES.

OWNER:
M.D. JACKSON
700 E. HIGHLAND AVE. STE 501
ELLENBURG, WA 99226

**LOTS: 68 (7200 SQ.FT. MINIMUM)-1 DETENTION TRACT
SEWER: CITY OF ELLENBURG
WATER: RESIDENTIAL**



<p>11/5</p> <p>PUBLIC WORKS DAY OF 30.00</p>	<p>WORKS</p>	<p>ENT</p> <p>VIEW ESTATES</p> <p>AND I FIND THAT</p> <p>HEREIN SHOWN</p> <p>REQUIREMENTS</p> <p>NT.</p> <p>DEC. A.D., 2006.</p>	<p>DIRECTOR</p> <p>VIEW ESTATES</p> <p>AND I FIND THAT IT</p> <p>PLAN OF THE</p> <p>ISION</p> <p>2006 A.D., 2006.</p>	<p>OR</p>	<p>TREASURER</p> <p>AND ASSESSMENTS</p> <p>RS AND FOR THIS</p> <p>TO BE FILED.</p> <p>002 & 0003 AND</p> <p>002, 0003 & 0004</p> <p>2006 A.D., 2006.</p>	<p>ASSESSOR</p> <p>VIEW ESTATES</p> <p>AND I FIND THE</p> <p>LE CONDITION FOR</p> <p>002 & 0003 AND</p> <p>002, 0003 & 0004</p> <p>2006 A.D., 2006.</p>	<p>SIONERS</p> <p>VIEW ESTATES</p> <p>AND I FIND THAT</p> <p>REQUIREMENTS</p> <p>NT.</p> <p>DEC. A.D., 2006.</p>
--	--------------	--	---	-----------	--	---	--